



OCSEA DUES

WHERE IT GOES

The OCSEA budget comes entirely from membership dues. Union dues are paid as a percentage of an employee's base salary. Currently, the percentage is 1.25%. Fair share fees are the same. Here is how that money is used.

Total Budget

OCSEA dollars are divided among five categories, the biggest of which provides direct services to the members. These services are called the Operations Budget and account for nearly two-thirds of OCSEA's total spending.

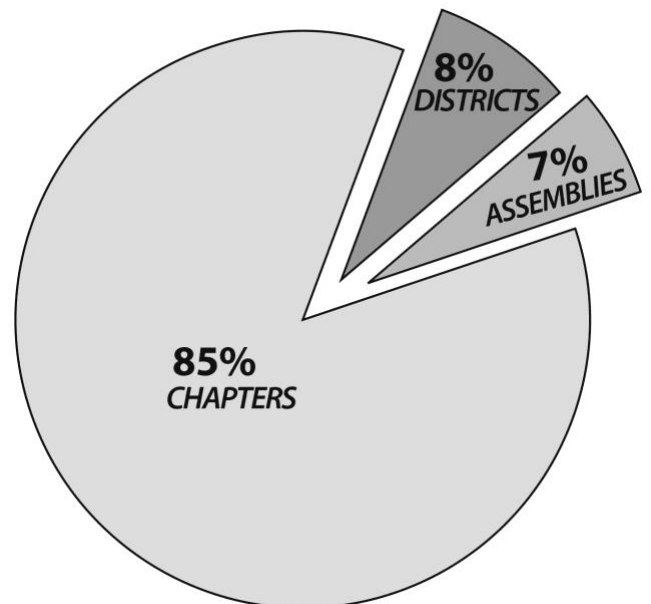
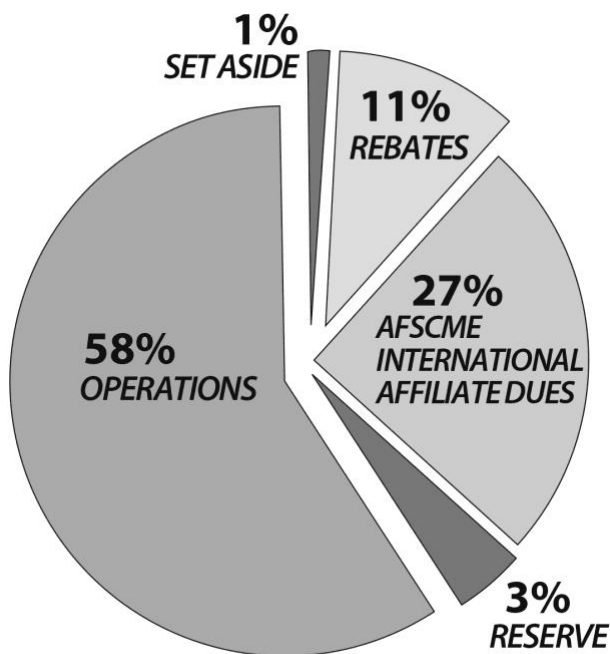
The balance of OCSEA's budget pays for such things as national representation and services provided by AFSCME, membership in the Ohio AFL-CIO, affiliations with various coalitions, legally required set-asides and rebates to OCSEA's Chapters, District Councils and Assemblies.

Rebates

A portion of your dues goes directly to fund the union's front-line organizational bodies, its Chapters, District Councils and Assemblies.

These "rebates" account for 11 percent of OCSEA's total budget. The largest portion of the rebates goes to the union's 133 chapters, districts, and assemblies.

The Subordinate Body funds are used to purchase office supplies, to provide training, to attend workshops, to print newsletters, to take care of union-related grievance expenses and to cover any other needs the Subordinate Body may have.



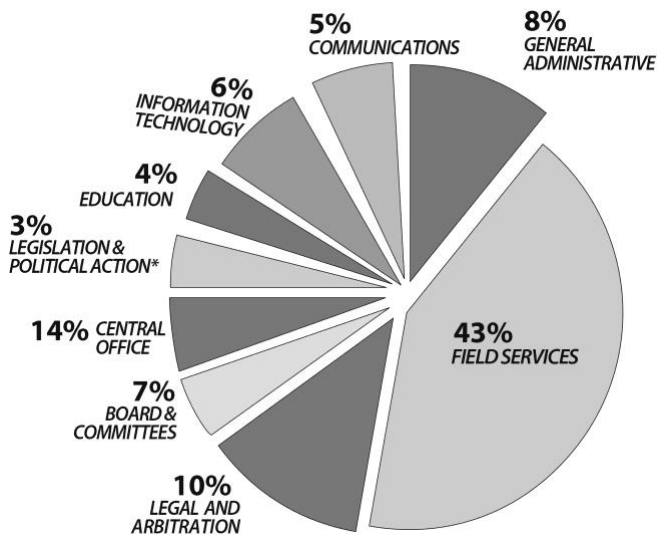


Operations Budget

The Operations Budget covers 58% of OCSEA’s total budget. It is used for services such as contract negotiations, arbitrations, lobbying on issues that directly affect public employees, legal services, education programs, conventions, conferences, publications, rent, utilities and supplies.

The annual Operations Budget is set by the OCSEA Board of Directors at its December board meeting each year.

***No dues money is given to political candidates.** Political action funds raised through voluntary donations are distributed through AFSCME’s PEOPLE program and OCSEA’s political action committee.



Revised 1/2019

PB

Printed In House by OCSEA

